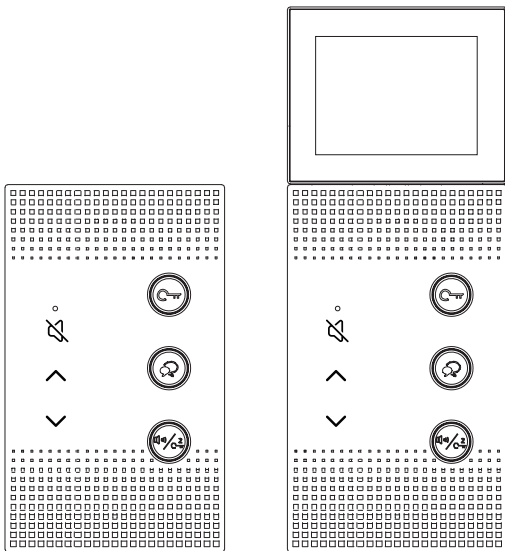


DH11/DH11-2.8

Audio unit/Audio unit with screen

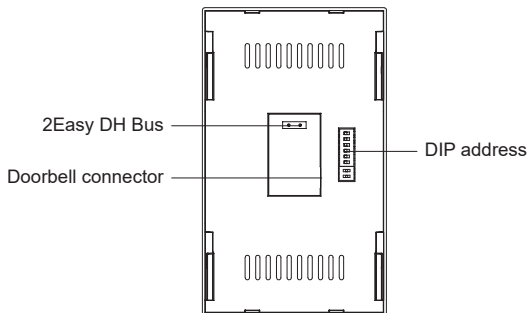
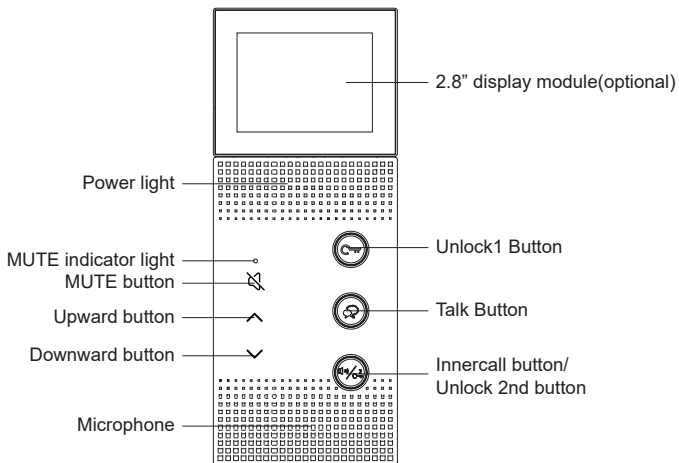
User Manual



Please read this manual carefully before using the product you purchase, and keep it well for future use.

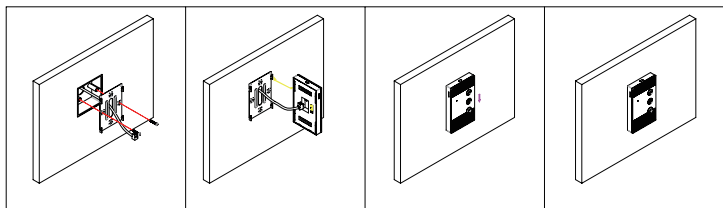
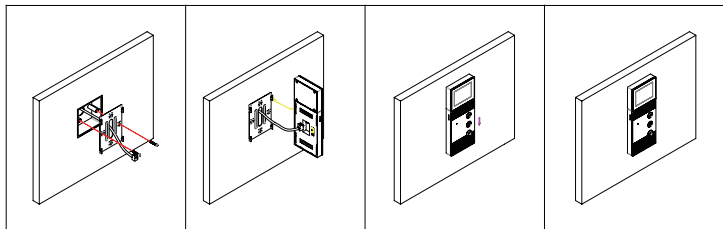
We reserve the right to modify the specification in this manual at any time without notice.

Parts and function



Mounting

The installation height is suggested to 145~160cm.



Installer setup

Address

Address setting by DIP switch, for address as below, DIP state from 1 -8 (1 means on, and 0 means off)

After change DIP must repower to take effect.

Address	DIP State	Address	DIP State	Address	DIP State
1	10000000	23	11101000	45	10110100
2	01000000	24	00011000	46	01110100
3	11000000	25	10011000	47	11110100
4	00100000	26	01011000	48	00001100
5	10100000	27	11011000	49	10001100
6	01100000	28	00111000	50	01001100
7	11100000	29	10111000	51	11001100
8	00010000	30	01111000	52	00101100
9	10010000	31	11111000	53	10101100
10	01010000	32	00000100	54	01101100
11	11010000	33	10000100	55	11101100
12	00110000	34	01000100	56	00011100
13	10110000	35	11000100	57	10011100
14	01110000	36	00100100	58	01011100
15	11110000	37	10100100	59	11011100
16	00001000	38	01100100	60	00111100
17	10001000	39	11100100	61	10111100
18	01001000	40	00010100	62	01111100
19	11001000	41	10010100	63	11111100
20	00101000	42	01010100	64	00000010
21	10101000	43	11010100		
22	01101000	44	00110100		

For example:



Code 4

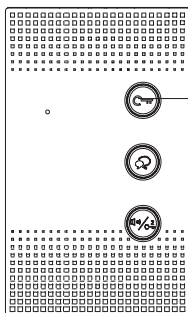


Code 8

Master/Slave setup

If the DH-11 works as slave unit, additional slave setup need to be take.
After DIP address setup (repower to take effect) and connect the unit with same address (master unit such as other monitors)

long press unlock button for 6s to set the master/slave automatically



Long press 6s
Each 3s will beep once, release
when hear 2 beeps.

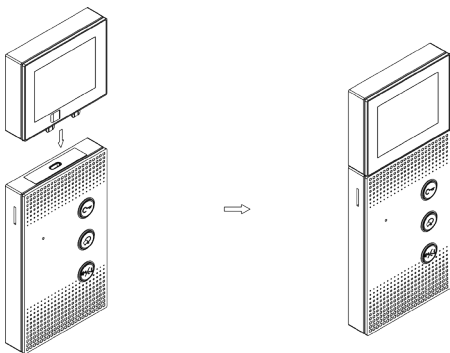
After release, the unit may beep 3 times, or long beep once means the auto master/slave setup is successful.

The unit will check if there are already same address monitor connected, if same address unit exist, it will set to salve automatically.

Add 2.8 screen module

!Please disconnect power before connect the screen!

Aim the type C plug to the socket and support plug to the socket then firmly plug in.



Check device “About” information

When DH-11 with screen, Long press talk button for 3s (after a beep) and release button to see “About” information.

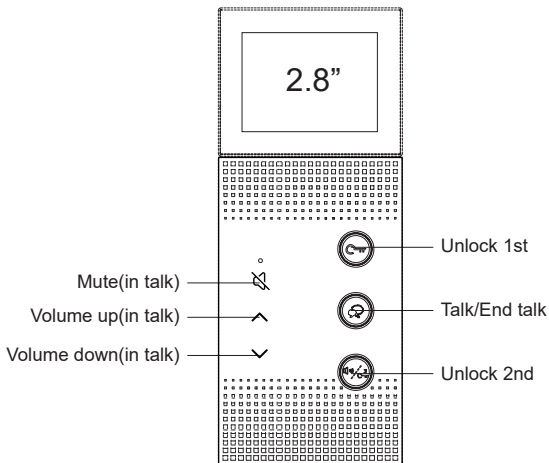
In the About, press unlock button to see debug information

Press unlock 2 to close the screen

User operation and setup

Receive calls

When DH-11 receive calls, the ringtone will sound and talk button will flash.
Press talk button to take, unlock button to unlock 1st lock , and unlock 2 button to unlock 2nd lock(if connected)



Mute MIC in talk

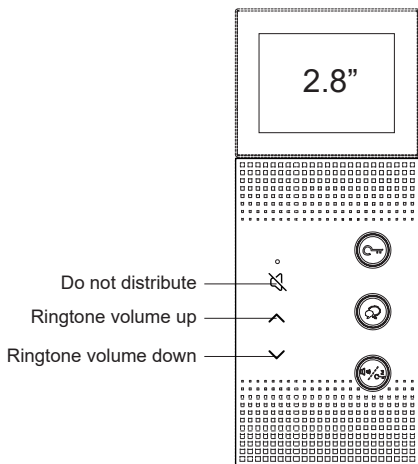
During talk press mute key to mute DH-11 MIC but you could still hear.

Adjust talk speaker volume

During talk press up and down key to adjust up or down the talk speaker volume

Do not distribute

When DH-11 standby press mute key to enable do not distribute, and the red LED will light up means the DND is vailed.



Adjust ringtone volume

When DH-11 standby press up and down key to adjust the ringtone volume.

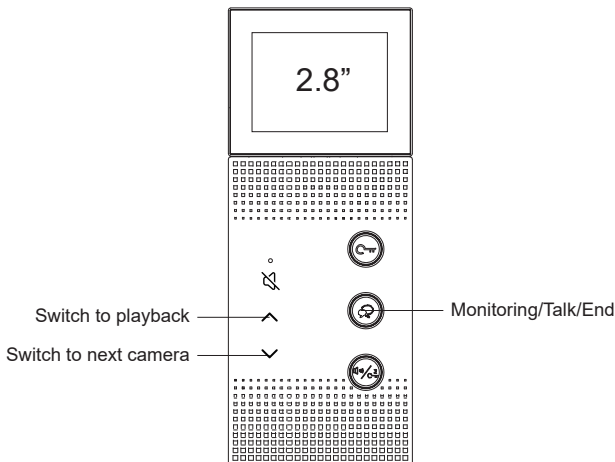
Change ringtone group

When DH-11 standby long press up key to switch ringtone group, with each switch will display all ringtone once.

Monitoring

When DH-11 with screen and in standby (talk button is not flashing in standby, otherwise see playback)

Press talk button to start monitoring, press again to talk, and press again to finish monitoring.



Switch to next camera

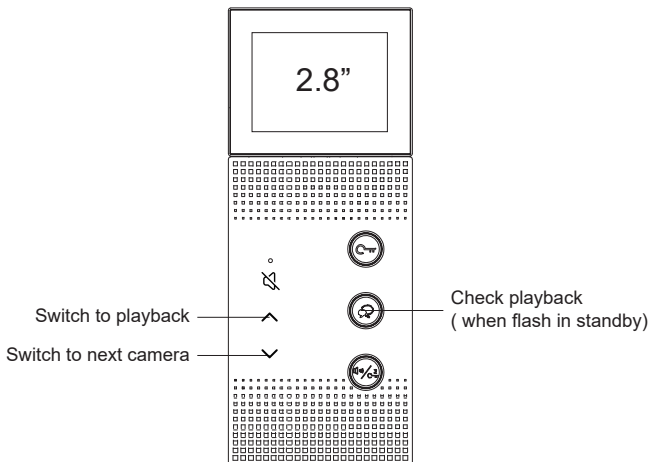
In monitoring , press down key to switch to other door station or camera(if connected)

Check playback

In monitoring , press up key to switch to video recording playback

Unpick calls playback

When DH-11 with screen and there is unpick calls, the talk button will flash in standby, press talk button to check playback



Check more playback

When the unit is in playback, press up and down key to view more play back.

Installer Advance

Change names display on DH850/DH624 namelist

Please use a touch screen monitor 7 inch, and connect to the same system, by monitor settings -> installer -> onsite tools to find the monitor and remotely change names for DH-11 unit.

Trouble shoot

Red LED is always flashing and not able to be called

Red LED will flash when the system is booting, but if the red LED is keeping flashing means it is not able to find any device in the system.

Please check if the system has DS1 and connected.

Unlock 2nd is always flashing and not able to be called

The device is in address setting protect mode, and DIP address is not the same with the address been setup.

To exit the mode, press both unlock 1 and talk button for 6s to exit the mode.

Specification

Power Source:	24Vdc ~ 30Vdc
Standby current:	55mA/1.5W
Working current:	64mA/1.8W (without screen) 90mA/2.5W (with screen)
Wi-Fi connectivity :	not support
Monitor screen:	2.8" TFT screen (optional)
Resolution:	640 * 480(optional)
Wire type:	2Easy DH 2 wires
Operating temp:	-10 to 50 (°C)
Dimension:	200.3(H)×81(W)×18.5(D)mm (with screen)
Dimension:	135(H)×81(W)×18.5(D)mm (without screen)

DH-ENG-11-V1